



CBC 1257901

061217/250T

NEALSIGNATUREHOMES.COM

941.200.0535

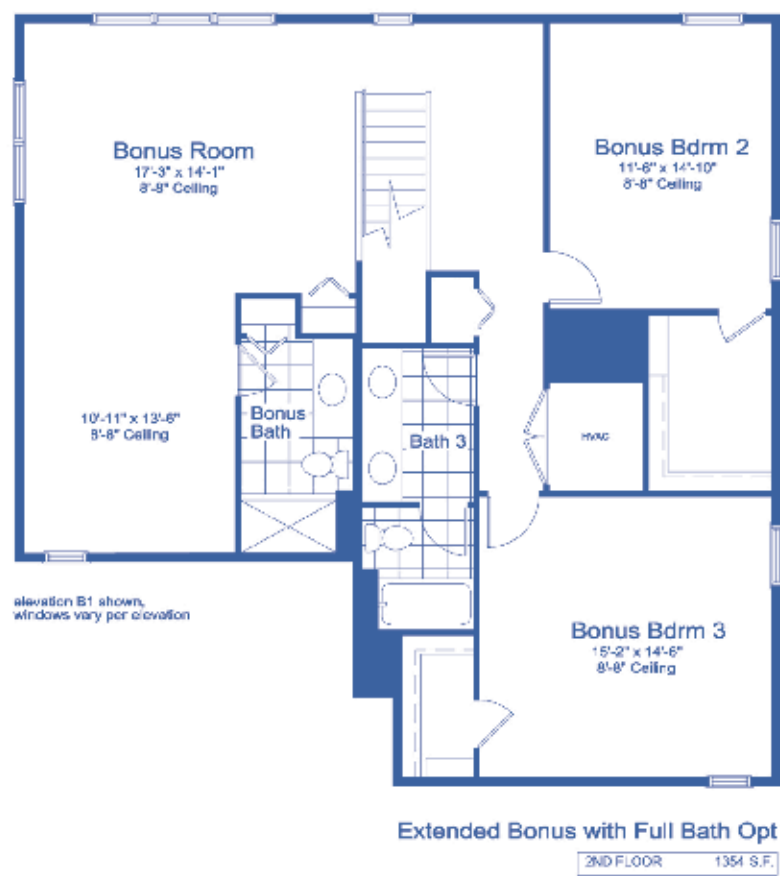
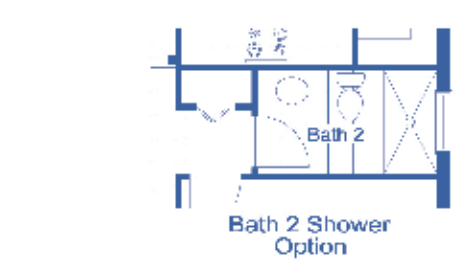
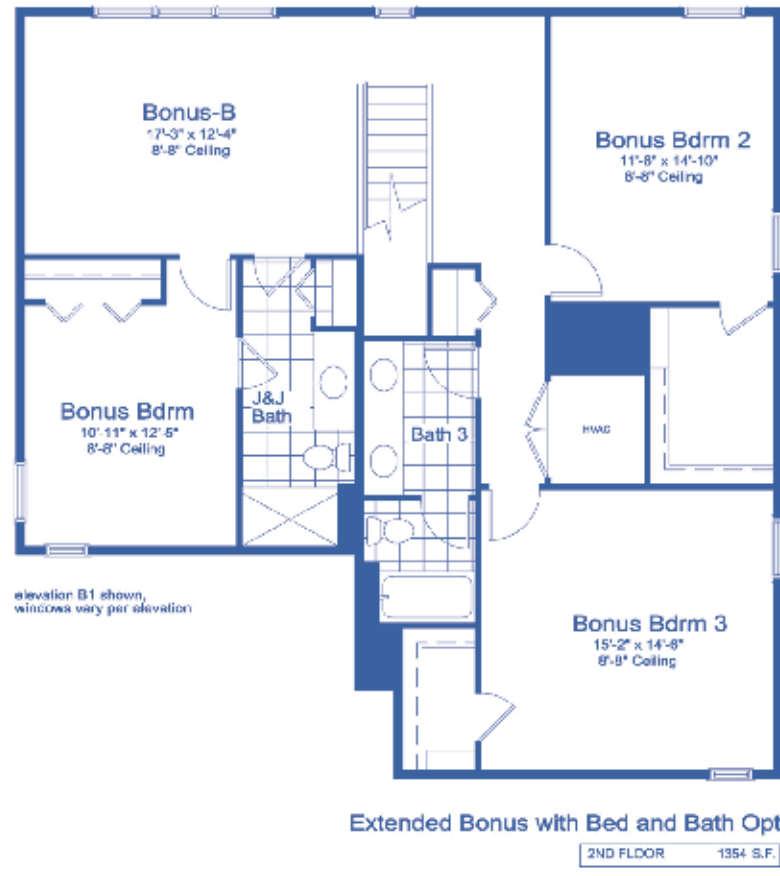
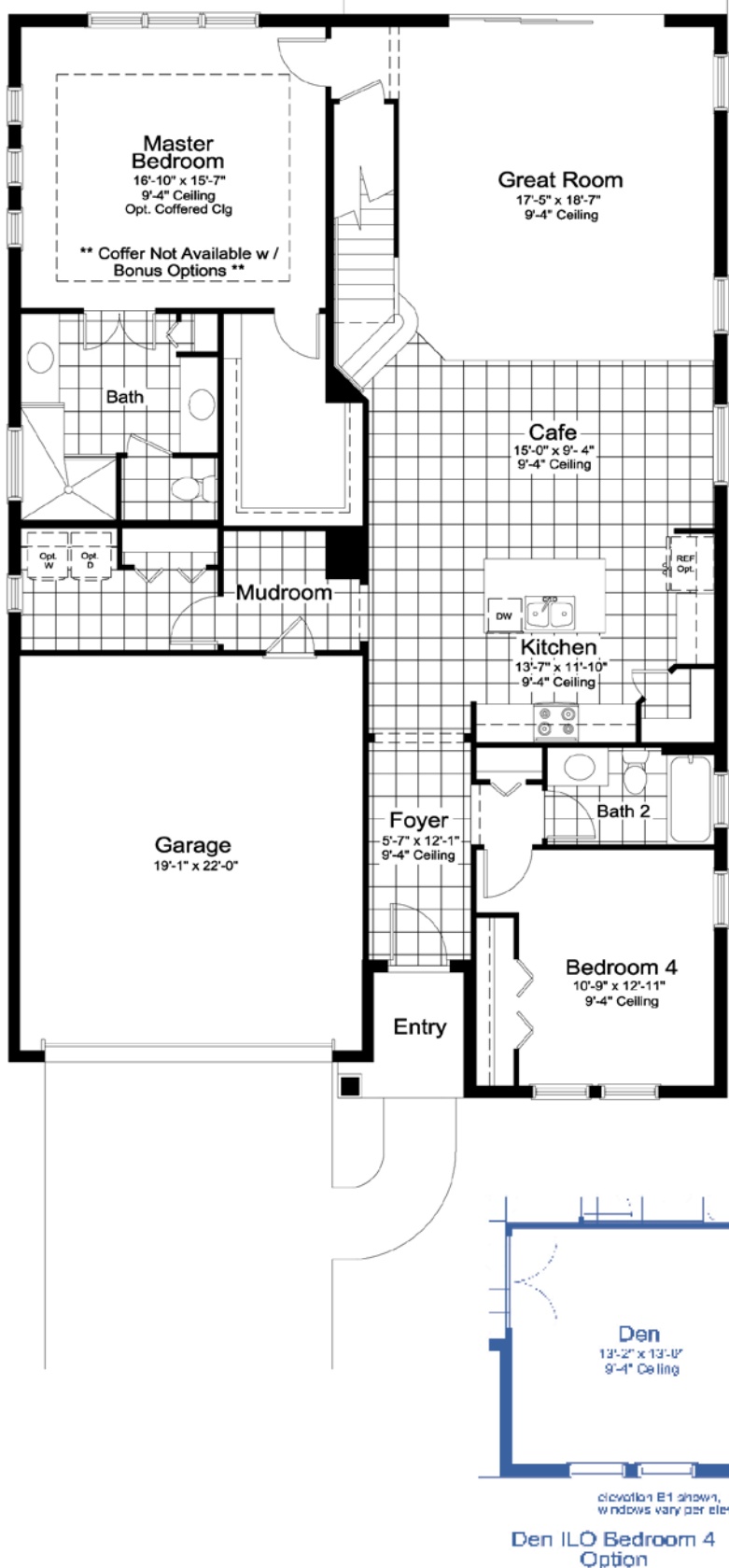
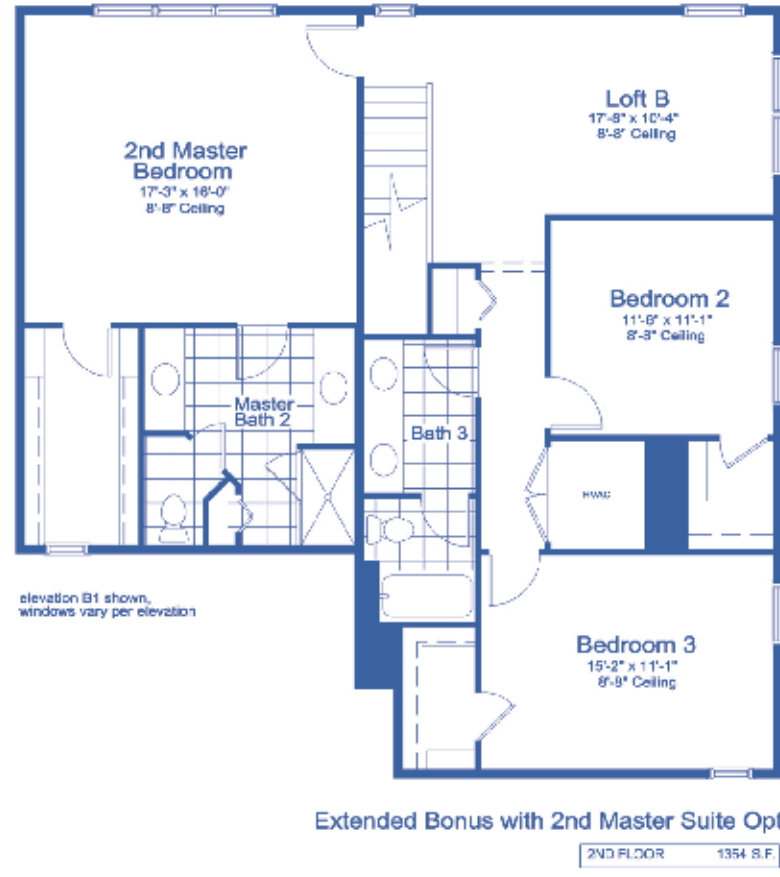
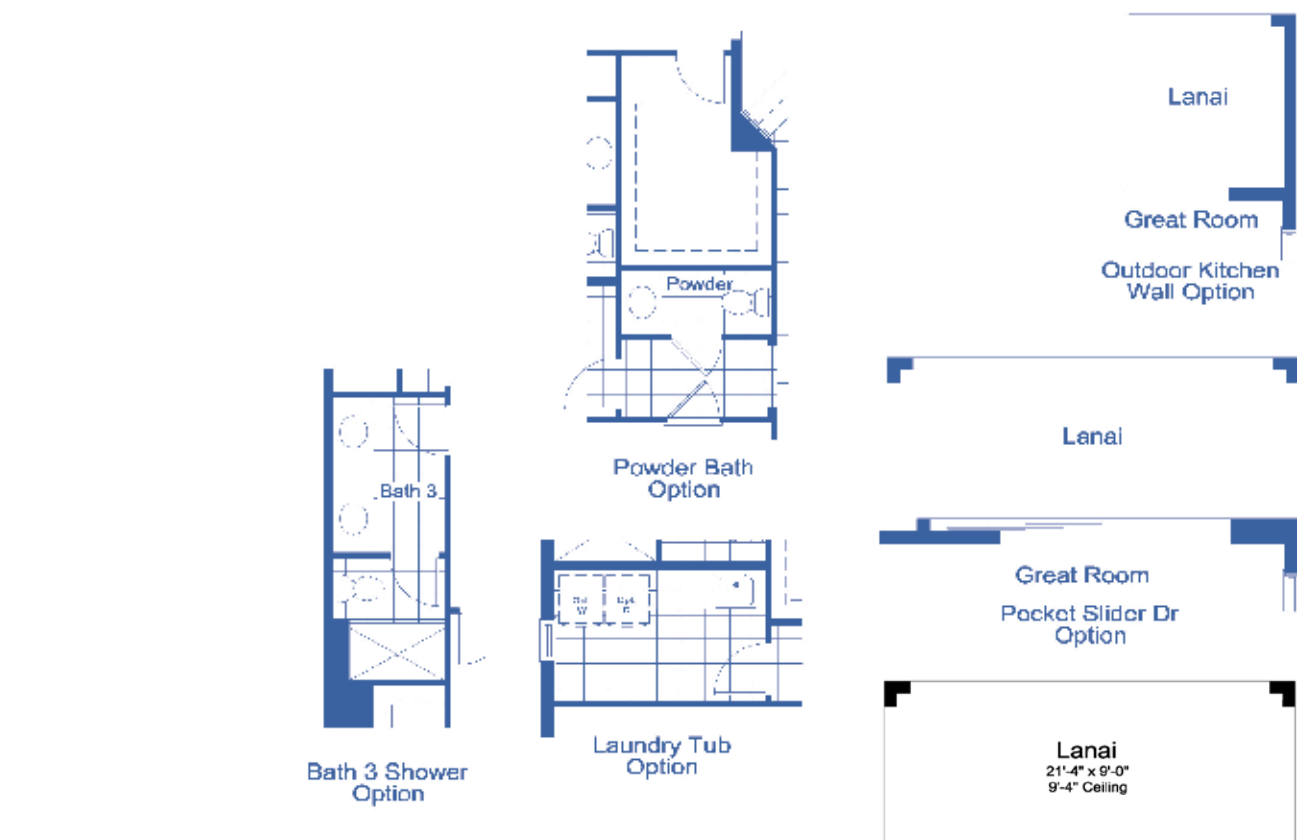
5305 PROVENCE LANE, SARASOTA, FLORIDA 34233

NEAL
SIGNATURE HOMES
The Luxury of Living Well

THE **VIVANT** / THE ART OF “**LIVING**” WELL



NEAL
SIGNATURE HOMES
The Luxury of Living Well



THE VIVANT

NEAL SIGNATURE HOMES

The Luxury of Living Well

1st Floor	1889 SF
2nd Floor	842 SF
Living	2731 SF
Garage	450 SF
Lanai	192 SF
Entry	39 SF
TOTAL	3412 SF

*Entry, windows and square footage may vary per elevation

Neal Signature Homes reserves the right to change elevations, floor plans, specifications and prices without notice. Special wall and window treatments, upgraded floor coverings, softscape and hardscape landscaping and many other items featured in and around the model homes are decorator suggested and not included in the purchase price. All renderings, elevations, floor plans and maps are an artist's conception, and are not intended to be an actual depiction of the buildings, fencing, walks, driveways or landscaping. Please see our sales representative with any questions.